

White Bluff Resort Overview

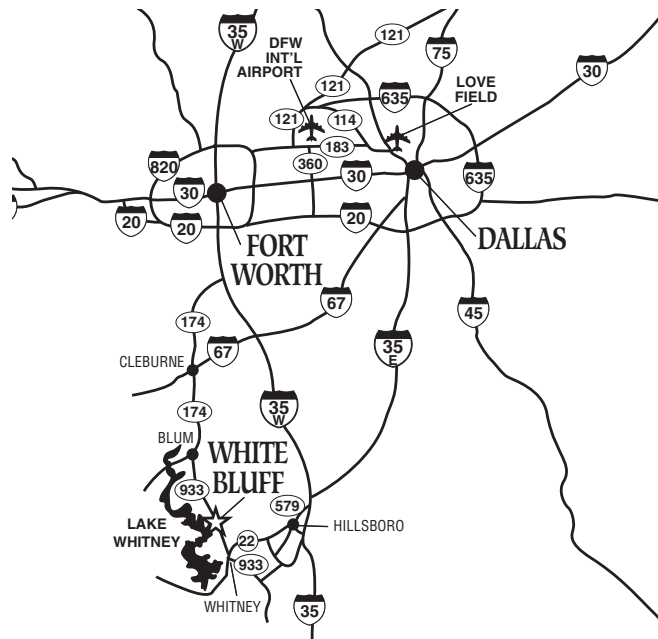
Located just 90 minutes South of Dallas, White Bluff Resort is perched atop beautiful Lake Whitney. Choose your favorite type of atmosphere; a breathtaking water view, exclusive golf view or a secluded wooded area.

White Bluff Resort is a master planned 3,450-acre residential community. Golf enthusiasts are sure to White Bluff's two championship golf courses, designed by 13-time PGA winner Bruce Lietzke, exceptionally beautiful and exciting to play. They are consistently ranked in the top 10 courses in the state. Rated four stars by Golf Digest.

White Bluff Resort has something for everyone, including deluxe overnight accommodations, upscale and casual dining, two championship golf courses, a full service Spa, fitness center, private marina, conference center, swimming pools, tennis courts, fishing lakes and much more. Whether you are planning a weekend getaway, an exciting family vacation or a business retreat for your organization, White Bluff Resort provides an ideal setting.

Resort Location

From Dallas/Fort Worth: Take I-35 South and take Exit 370 (Spur 579) west to Hillsboro. At the "Old Courthouse," in Hillsboro, take a right going west on Hwy. 22 to Whitney (11 miles). Take the right fork at the Exxon Station (Loop 180) in Whitney and continue to the traffic light. Turn right at the traffic light onto Hwy. 933. White Bluff Resort is approximately 6 miles on the left.



WHITE BLUFF RESORT ON LAKE WHITNEY

(800) 324-7438 Ext. 9887 • e-mail groupsales@ddresorts.com • www.whitebluffresort.com

White Bluff Meeting Facilities

The Conference Center at White Bluff has been the destination selected by many organizations for business meetings, training seminars and executive retreats. White Bluff caters to small-to medium-size business meetings. According to corporate meeting planners, the most significant reasons for choosing White Bluff are its close proximity to the Dallas/Fort Worth Metroplex, excellent meeting facilities, two 18-hole championship golf courses and a friendly, professional staff. Furthermore, planners give high ratings to the sleeping accommodations, spectacular scenery, relaxed atmosphere and the superb cuisine. Capture your participants' full attention by conducting a meeting at the Conference Center, and combine recreational activities such as a golf outing or fishing expedition to create a memorable experience.

The 3,500-square foot conference center has 1,800 square feet of versatile meeting space in a facility separate from the Inn, providing clients with a quiet space to focus on the business at hand. Step outside the meeting room onto the grand outdoor terrace for a short break and to enjoy a view of Lake Whitney. White Bluff Resort offers full-service facilities in a beautiful, relaxed setting, with a professional, attentive staff to ensure your meeting's success. Our on-site Group Sales Manager will be happy to take care of all the arrangements, down to the last detail.

Conference Center & Banquet Specifications

- 3,500-square foot conference center with 1,800 square feet of functional meeting space, catering facility and restrooms.
- Ability to utilize indoor meeting space as one 60' x 30' room or three 20' x 30' rooms divided by airwalls; 11' high ceilings.
- Over 700 square feet of adjoining outdoor terrace space.
- The center's foyer may also be utilized to set up food and beverage service.
- Selection of additional audiovisual equipment is available for rental.
- Complete Meeting Packages (CMP) are available and include room accommodations, conference setup, three meals per day, morning and afternoon refreshment service, audiovisual equipment and an on-site Conference Coordinator. Specifications and rates available upon request.
- The on-site Conference Coordinator organizes and executes all of your meeting's details, and will be happy to assist with planning a group golf outing, fishing expedition, or other recreational activity.
- Additional meeting space is available for small groups in our Lone Star Room, (16' X 40') located adjacent to the Conference Center and overlooking the Cascade Pool, as well as The 19th Hole.
- Also on premise are two covered outdoor pavilions for private gatherings. The pavilion has electrical service, picnic tables and an oversized barbecue pit. The adjoining swimming pool may be reserved as well.
- Group transportation coordination is available through the Group Sales Manager.

(See Reverse for Diagram)



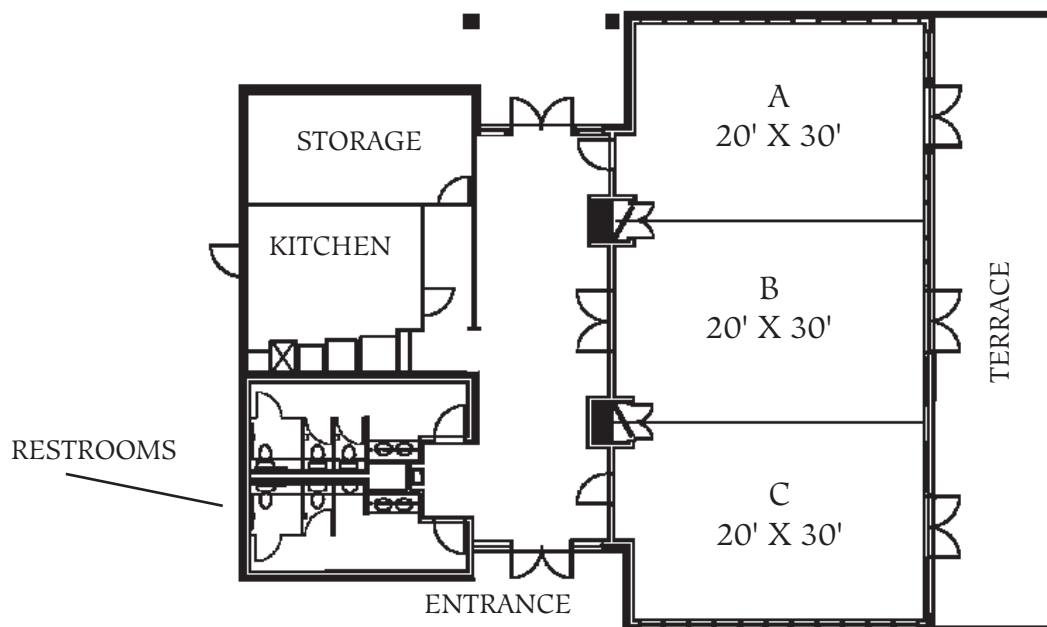
WHITE BLUFF RESORT ON LAKE WHITNEY

(800) 324-7438 Ext. 9887 • e-mail groupsales@ddresorts.com • www.whitebluffresort.com

MEETING ROOM CAPACITY

Conference Center	110 people
Lone Star Room	30 people
The 19th Hole	20 people

MEETING ROOMS
(TOTAL) 60' X 30'



WHITE BLUFF RESORT ON LAKE WHITNEY

(800) 324-7438 Ext. 9887 • e-mail groupsales@ddresorts.com • www.whitebluffresort.com

Corporate Meeting Package

Package Includes:

Overnight Accommodations
Breakfast, Lunch, Dinner
Continuous Beverage Service
Deluxe Snack Breaks
Meeting Room
Standard Audiovisual Equipment

(Wireless Internet, 2 Flip Charts, Overhead Projector, Screen, TV/DVD and NEC LCD Projector)

APRIL 30, 2012 - NOVEMBER 4, 2012

Weekday

\$256 Per Person, Per Day
Single Occupancy

\$193 Per Person, Per Day
Double Occupancy

Weekend

\$277 Per Person, Per Day
Single Occupancy

\$225 Per Person, Per Day
Double Occupancy

Food and beverage gratuities included. All state and local taxes not included.

JANUARY 1, 2012 - APRIL 29, 2012
NOVEMBER 5, 2012 - DECEMBER 31, 2012

Weekday

\$193 Per Person, Per Day
Single Occupancy

\$162 Per Person, Per Day
Double Occupancy

Weekend

\$225 Per Person, Per Day
Single Occupancy

\$183 Per Person, Per Day
Double Occupancy

Food and beverage gratuities included. All state and local taxes not included.

